



FITTING INSTRUCTIONS FOR HSH0001BK HEAT SHIELD
KTM DUKE 790 '18-



THIS KIT CONTAINS THE ITEMS PICTURED AND LABELLED BELOW.
DO NOT PROCEED UNTIL YOU ARE SURE ALL PARTS ARE PRESENT.

Please note that the way the kit is packed does not necessarily represent the way of mounting to the bike.

THE PARTS SHOWN MAY BE REPRESENTATIVE ONLY (FOR CLARITY OF INSTRUCTIONS ONLY).

TOOLS REQUIRED.

- T25, T30 torx driver.
- 12, 13mm spanner.

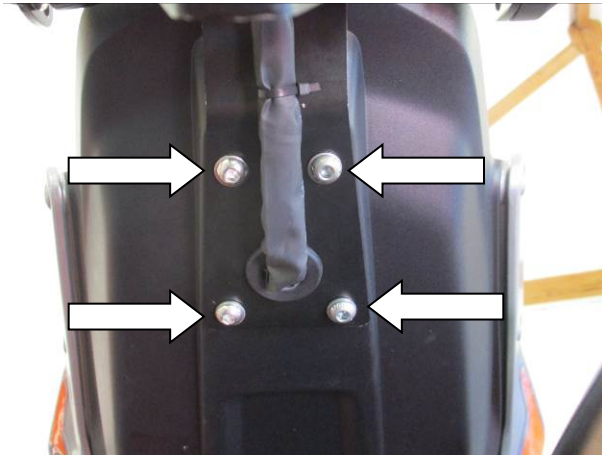
MAXIMUM TORQUE SETTINGS

- M5 Bolt = 12 Nm
- M6 Bolt = 15 Nm

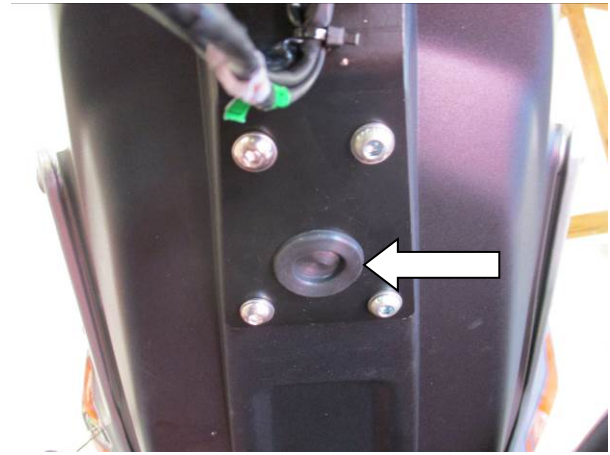


LEGEND

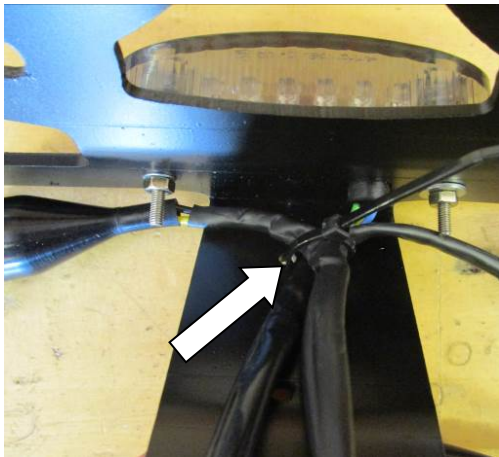
ITEM 1 = HEAT SHIELD (SMW0130) (x1)



Picture 1



Picture 2



Picture 3



Picture 4



Picture 5



FITTING INSTRUCTIONS

Note: If using OEM indicators, there must be a heatshield (item 1) fitted to the RH indicator to protect it from exhaust heat.

- If the tail tidy has already been fitted to the motorcycle, remove the seat and unplug the R&G tail light and indicators from the wiring loom, taking note where each connector goes.
- Remove the four bolts shown in Picture 1, carefully pull the rubber bung (shown in Picture 2) and wiring through and remove the tail tidy from the motorcycle.
- Remove the indicator required to fit the heat shield, you may need to remove the cable tie shown in Picture 3 to do so.
- Remove the R&G tail light from the tail bracket.
- Mount the indicator to the R&G tail bracket by passing the threaded boss on the back of the indicator through the tail tidy (and through the heat shield [item 1]), and secure in place by reusing the OEM washers and nuts as shown in picture 4.
- Re-fit the R&G tail light to the tail bracket as shown in picture 4.
- Re-fit the indicator wiring covers as shown in picture 5.
- Feed the wires through the opening shown in Picture 2, and re-fit the rubber bung.
- Reconnect the R&G tail light and indicators to the wiring loom.
- Re-fit the R&G tail tidy to the motorcycle, using the four bolts shown in Picture 1.

ISSUE 1 06/11/2018 (LF)

Digital copies of these instructions are available to download from www.rg-racing.com

CONSUMER NOTICE

The catalogue description and any exhibition of samples are only broad indications of the Products and R&G may make design changes which do not diminish their performance or visual appeal and supplying them in such state shall conform to the order. The Buyer acknowledges no representation or warranty (other than as to title) has been given or will apply to the Products other than those in R&G's order or confirmation and the Buyer confirms it has chosen the Products as being of merchantable quality and suitable for its particular purposes. Where R&G fits the Products or undertakes other services it shall exercise reasonable skill and care and rectify any fault free of charge unless the workmanship has been disturbed. The Buyer is responsible for ensuring that the warranty on the motorcycle is not affected by the fitting of the Products. On return of any defective Products R&G shall at its option either supply a replacement or refund the purchase money but shall not be liable if the Products have been modified or used or maintained otherwise than in accordance with R&G's or manufacturer's instructions and good engineering practice or if the defect arises from accident or neglect. Other than identified above and subject to R&G not limiting its liability for causing death and personal injury, it shall not be liable for indirect or consequential loss and otherwise its liability shall be limited to the amounts paid by the Buyer for the Products or the fitting or service concerned. These terms do not affect the Buyer's statutory rights.

R&G RETURNS POLICY (NON-FAULTY GOODS)

Returns must be pre-authorized (if not pre-authorized the return will be rejected). Goods may only be returned direct to us if they were purchased direct from us (customer must prove if necessary). Otherwise to be returned to original vendor. Goods must be in re-sellable condition, in the opinion of R&G. All returns are subject to a 25% restocking and handling fee (25% of the gross value exc. P&P – at the prevailing price at time of purchase). The customer must pay any and all carriage charges. No returns of discontinued products, unless within 14 days of purchase. This policy does not affect your statutory rights and does not refer to faulty goods.

R&G

Unit 1, Shelley's Lane, East Worldham, Alton, Hampshire, GU34 3AQ

Tel: +44 (0)1420 89007 Fax: +44 (0)1420 87301 www.rg-racing.com Email: info@rg-racing.com



NOTICE DE MONTAGE POUR HSH0001BK PROTECTION CHALEUR
KTM DUKE 790 '18-



Le kit contient les articles exposés ci-dessous, vérifier que toutes les pièces soient présentes avant de procéder au montage.

La façon dont le kit est emballé ne correspond pas forcément à la façon de monter les pièces sur la moto.

LES PARTIES PRESENTÉES PEUVENT ETRE UNIQUEMENT REPRESENTATIVES (POUR LA CLARTE DES INSTRUCTIONS UNIQUEMENT).

OUTILS REQUIS.

- Clé Torx T25, T30.
- Clé à molette 12, 13mm.

Valeurs de serrage recommandées

M5 BOULON = 12Nm

M6 BOULON = 15Nm

R&G

Unit 1, Shelley's Lane, East Worldham, Alton, Hampshire, GU34 3AQ
Tel: +44 (0)1420 89007 Fax: +44 (0)1420 87301 www.rg-racing.com Email: info@rg-racing.com



LÉGENDE

ARTICLE 1 = PROTECTION CHALEUR (SMW0130) (x1)

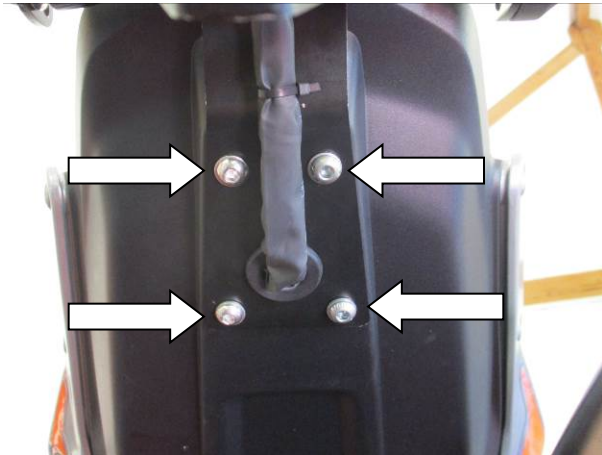


Photo 1

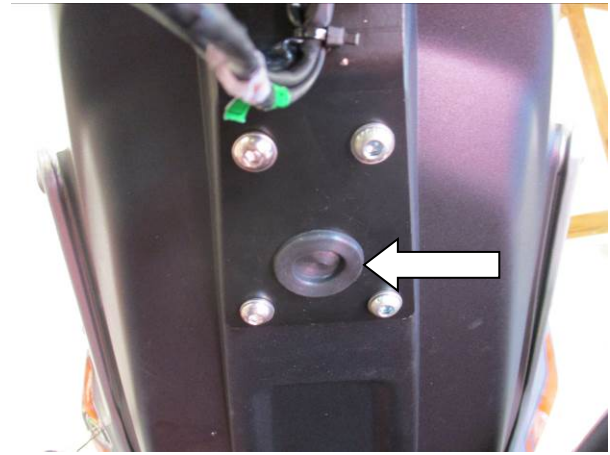


Photo 2

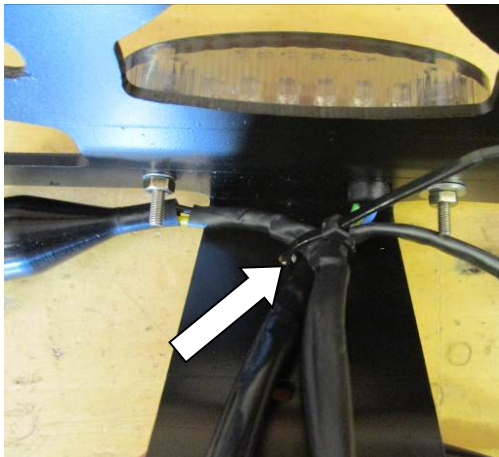


Photo 3



Photo 4



Photo 5



NOTICE DE MONTAGE

Note: Si vous utilisez les clignotants d'origine, il doit y avoir une protection chaleur (article 1) montée sur le clignotant côté droit pour protéger le clignotant de la chaleur émise par le pot d'échappement.

- Si le support de plaque a déjà été monté sur la moto, enlever le siège puis débrancher le feu de plaque R&G et les clignotants du faisceau de câble, en notant la correspondance des connecteurs.
- Enlever les 4 boulons indiqués sur la Photo 1, tirer doucement le morceau de caoutchouc (voir Photo 2) et le fil à travers, puis enlever le support de plaque de la moto.
- Enlever le clignotant requis pour installer la protection chaleur, pour cela vous aurez peut-être besoin de retirer le collier de serrage, voir Photo 3.
- Enlever le feu de plaque R&G de son support.
- Monter le clignotant sur le support R&G en passant le filetage au bas du clignotant dans le support (et à travers la protection chaleur [article 1]), puis fixer la position en réutilisant les rondelles d'origine et écrous, voir photo 4.
- Remonter le feu de plaque R&G sur le support de plaque, voir photo 4.
- Remonter les caches fils de clignotants, voir photo 5.
- Passer les fils dans l'ouverture, voir Photo 2, puis replacer le morceau en caoutchouc.
- Reconnecter le feu de plaque R&G et les clignotants sur le faisceau de câbles.
- Remonter le support de plaque R&G sur la moto, en utilisant les 4 boulons, voir Photo 1.

ISSUE 1 06/11/2018 (LF)

Notice disponible au téléchargement sur www.rg-racing.com

CONSUMER NOTICE

The catalogue description and any exhibition of samples are only broad indications of the Products and R&G may make design changes which do not diminish their performance or visual appeal and supplying them in such state shall conform to the order. The Buyer acknowledges no representation or warranty (other than as to title) has been given or will apply to the Products other than those in R&G's order or confirmation and the Buyer confirms it has chosen the Products as being of merchantable quality and suitable for its particular purposes. Where R&G fits the Products or undertakes other services it shall exercise reasonable skill and care and rectify any fault free of charge unless the workmanship has been disturbed. The Buyer is responsible for ensuring that the warranty on the motorcycle is not affected by the fitting of the Products. On return of any defective Products R&G shall at its option either supply a replacement or refund the purchase money but shall not be liable if the Products have been modified or used or maintained otherwise than in accordance with R&G's or manufacturer's instructions and good engineering practice or if the defect arises from accident or neglect. Other than identified above and subject to R&G not limiting its liability for causing death and personal injury, it shall not be liable for indirect or consequential loss and otherwise its liability shall be limited to the amounts paid by the Buyer for the Products or the fitting or service concerned. These terms do not affect the Buyer's statutory rights.

R&G RETURNS POLICY (NON-FAULTY GOODS)

Returns must be pre-authorised (if not pre-authorised the return will be rejected). Goods may only be returned direct to us if they were purchased direct from us (customer must prove if necessary). Otherwise to be returned to original vendor. Goods must be in re-sellable condition, in the opinion of R&G. All returns are subject to a 25% restocking and handling fee (25% of the gross value exc. P&P – at the prevailing price at time of purchase). The customer must pay any and all carriage charges. No returns of discontinued products, unless within 14 days of purchase. This policy does not affect your statutory rights and does not refer to faulty goods.

R&G

Unit 1, Shelley's Lane, East Worldham, Alton, Hampshire, GU34 3AQ

Tel: +44 (0)1420 89007 Fax: +44 (0)1420 87301 www.rg-racing.com Email: info@rg-racing.com



MONTAGEANLEITUNG FÜR HSH0001BK HITZESCHUTZ
KTM DUKE 790 '18-



ALLE KIT-TEILE SIND UNTEN ABGEBILDET UND GEKENNZEICHNET. BEVOR SIE MIT DER MONTAGE BEGINNEN, ÜBERPRÜFEN SIE, DASS ALLE TEILE VORHANDEN SIND.

Hinweis: Die Verpackung der Teile stellt nicht die Reihenfolge der Montage dar.

DIE UNTEN ABGEBILDETEN TEILE DIENEN LEDIGLICH ZUR ERKLÄRUNG

SIE BENÖTIGEN FOLGENDES WERKZEUG

T25, T30 Torx-Schlüssel
12, 13mm Gabelschlüssel

MAX. ANZUGSDREHMOMENT

M5 SCHRAUBE = 12Nm
M6 SCHRAUBE = 15Nm



LIEFERUMFANG

ARTIKEL 1 = HITZESCHUTZ (SMW0130) (x1)

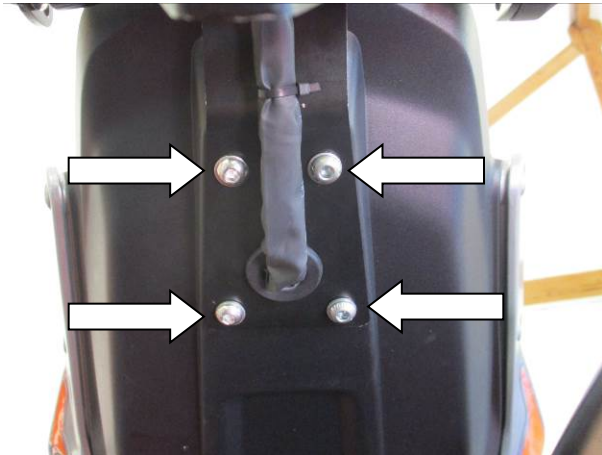


Abbildung 1

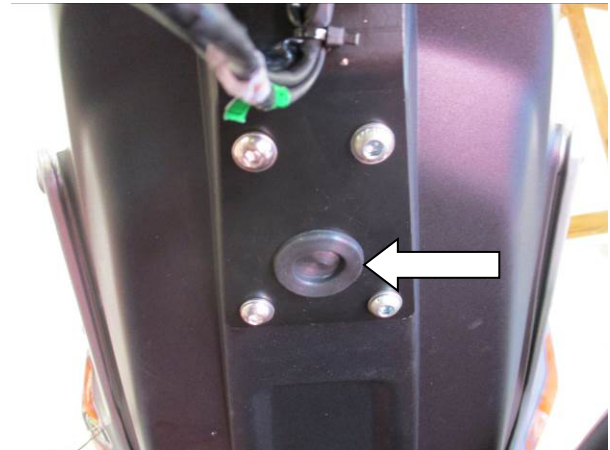


Abbildung 2

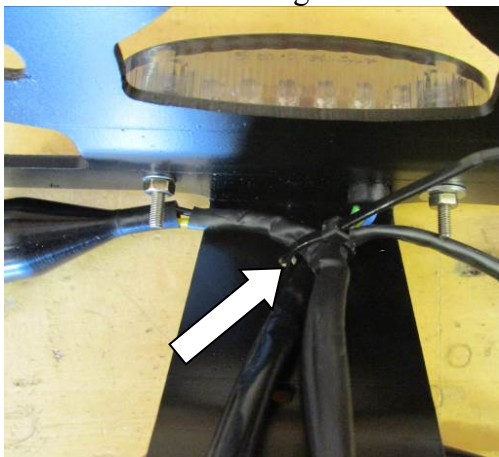


Abbildung 3



Abbildung 4



Abbildung 5



MONTAGEANLEITUNG

Hinweis: Wenn Sie die Originalblinker verwenden, muss ein Hitzeschutz (Artikel 1) am rechten Blinker montiert werden, um ihn von der Hitze des Auspuffs zu schützen.

- Wenn der Kennzeichenhalter bereits am Motorrad montiert wurde, entfernen Sie den Sitz und trennen Sie die R&G Kennzeichenbeleuchtung und Blinker vom Kabelbaum (bitte die Position des jeweiligen Steckverbinders notieren).
- Entfernen Sie die vier Schrauben, die in Abbildung 1 abgebildet sind. Die Gummitülle (siehe Abbildung 2) und die Kabel vorsichtig durchziehen und den Kennzeichenhalter vom Motorrad entfernen.
- Entfernen Sie die den Blinker, um den Hitzeschutz montieren zu können – hierbei müssen Sie eventuell den Kabelverbinder entfernen, der in Abbildung 3 abgebildet ist.
- Entfernen Sie die R&G Kennzeichenbeleuchtung von der Halterung.
- Den Blinker an der R&G Halterung montieren, indem Sie den Gewindeinsatz hinten am Blinker durch den Kennzeichenhalter führen (und durch den Hitzeschutz [Artikel 1]), und mit den original Unterlegscheiben und Mutter wieder befestigen – siehe Abbildung 4.
- Montieren Sie die R&G Kennzeichenbeleuchtung wieder an der Halterung wie in Abbildung 4 abgebildet.
- Montieren Sie die Abdeckungen für die Kabel wieder wie in Abbildung 5 abgebildet.
- Führen Sie die Kabel durch die Öffnung, die in Abbildung 2 abgebildet ist und montieren Sie die Gummitülle wieder.
- Die Kennzeichenbeleuchtung und die Blinker wieder am Kabelbaum anschließen.
- Montieren Sie den R&G Kennzeichenhalter am Motorrad wieder – benutzen Sie hierbei die vier Schrauben, die in Abbildung 1 abgebildet sind.

AUSGABE 1 06/11/2018 (LF)

Eine digitale Version dieser Montageanleitung kann auf folgender Seite heruntergeladen werden:
www.rg-racing.com

CONSUMER NOTICE

The catalogue description and any exhibition of samples are only broad indications of the Products and R&G may make design changes which do not diminish their performance or visual appeal and supplying them in such state shall conform to the order. The Buyer acknowledges no representation or warranty (other than as to title) has been given or will apply to the Products other than those in R&G's order or confirmation and the Buyer confirms it has chosen the Products as being of merchantable quality and suitable for its particular purposes. Where R&G fits the Products or undertakes other services it shall exercise reasonable skill and care and rectify any fault free of charge unless the workmanship has been disturbed. The Buyer is responsible for ensuring that the warranty on the motorcycle is not affected by the fitting of the Products. On return of any defective Products R&G shall at its option either supply a replacement or refund the purchase money but shall not be liable if the Products have been modified or used or maintained otherwise than in accordance with R&G's or manufacturer's instructions and good engineering practice or if the defect arises from accident or neglect. Other than identified above and subject to R&G not limiting its liability for causing death and personal injury, it shall not be liable for indirect or consequential loss and otherwise its liability shall be limited to the amounts paid by the Buyer for the Products or the fitting or service concerned. These terms do not affect the Buyer's statutory rights.

R&G RETURNS POLICY (NON-FAULTY GOODS)

Returns must be pre-authorised (if not pre-authorised the return will be rejected). Goods may only be returned direct to us if they were purchased direct from us (customer must prove if necessary). Otherwise to be returned to original vendor. Goods must be in re-sellable condition, in the opinion of R&G. All returns are subject to a 25% restocking and handling fee (25% of the gross value exc. P&P – at the prevailing price at time of purchase). The customer must pay any and all carriage charges. No returns of discontinued products, unless within 14 days of purchase. This policy does not affect your statutory rights and does not refer to faulty goods.

R&G

Unit 1, Shelley's Lane, East Worldham, Alton, Hampshire, GU34 3AQ

Tel: +44 (0)1420 89007 Fax: +44 (0)1420 87301 www.rg-racing.com Email: info@rg-racing.com